

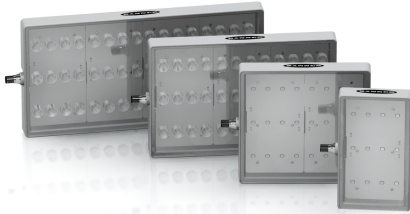
WLA Series Work Light



more sensors, more solutions

General-Purpose LED Work Light

For the latest technical information about this product, including specifications, dimensions, and wiring, see www.bannerengineering.com.

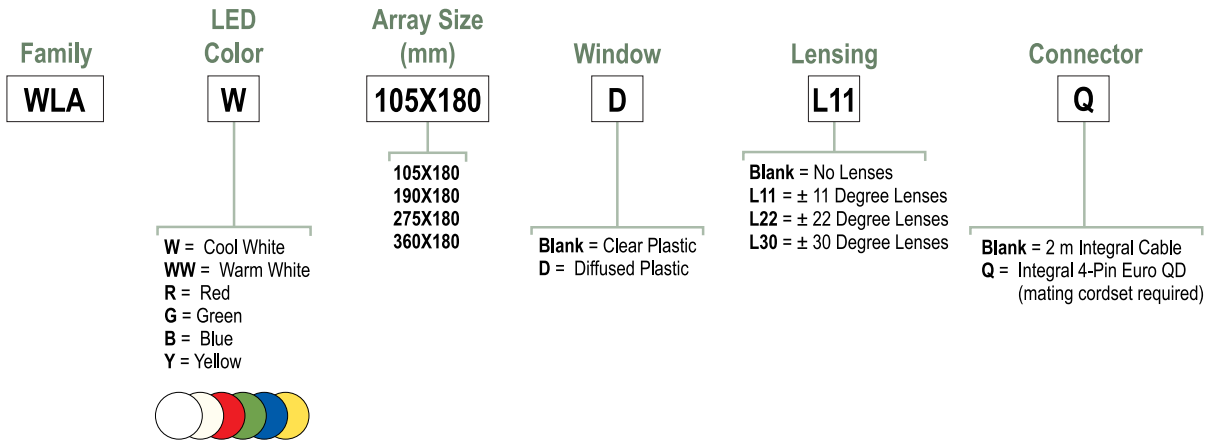


Lensed models shown at left; non-lensed models shown at right

- High power solid state LED array in white and color models
- Illuminates a large area with an even pattern of light and no shadows
- Designed for area and machine lighting
- Rugged thermoplastic housing rated to IP69K
- Lensed models provide a concentrated, more intense, beam pattern
- Available in four sizes
- Cabled and quick-disconnect models available

Models

Non-Lensed Models ¹	Lensed Models (xx) ¹ • 11 = ± 11° lenses • 22 = ± 22° lenses • 30 = ± 30° lenses	Housing Length "L" ²	Connection ³	LED Color	Environmental Rating	Input Voltage
WLAW105X180Q	WLAW105X180LxxQ	105 mm	4-pin Euro integral QD connector	Cool white	IP69K	12 to 30V dc
WLAW190X180Q	WLAW190X180LxxQ	190 mm				
WLAW275X180Q	WLAW275X180LxxQ	275 mm				
WLAW360X180Q	WLAW360X180LxxQ	360 mm				



Specifications

Supply Voltage and Current

12 to 30V dc (10% max. ripple)

Use only with suitable Class 2 power supply.

Max current per length:

Light Length	12V dc	24V dc	30V dc	Watts
105 mm	0.8A	0.4A	0.32A	9.6
190 mm	1.6A	0.8A	0.64A	19.2
275 mm	2.4A	1.2A	0.96A	28.8
360 mm	3.2A	1.6A	1.28A	38.4

¹ Additional color and window options listed in the model key.

² See *Dimensions* on page 3.

³ Integral QD models only are listed. For integral 2 m (6.5' ft) PVC cable, omit suffix Q from model number (example, WLAW105X180). A model with a QD requires a mating cordset (see *Cordsets* on page 4).



Lumens and Lux

Light Length	Lumens ⁴					
	Cool White	Warm White	Green	Red	Yellow	Blue
105 mm	550	435	325	125	275	95
190 mm	1100	870	650	250	550	190
275 mm	1650	1305	975	375	825	285
360 mm	2200	1740	1300	500	1100	380

Light Length	Non Lensed Models Max Lux ⁴ at 1m						L11 Lensed Models Max Lux ⁴ at 1m					
	Cool White	Warm White	Green	Red	Yellow	Blue	Cool White	Warm White	Green	Red	Yellow	Blue
105 mm	215	170	115	55	110	30	2865	2290	2910	1375	1795	815
190 mm	430	340	230	110	220	60	5140	4110	4990	2605	3360	1385
275 mm	645	510	345	165	330	90	7565	6050	6400	3345	4705	1760
360 mm	860	680	460	220	440	120	8875	7100	7405	3730	5605	2030

Light Length	L22 Lensed Models Max Lux ⁴ at 1m						L30 Lensed Models Max Lux ⁴ at 1m					
	Cool White	Warm White	Green	Red	Yellow	Blue	Cool White	Warm White	Green	Red	Yellow	Blue
105 mm	1110	880	1125	530	695	315	760	600	770	365	475	215
190 mm	2155	1705	2090	1090	1410	580	1500	1185	1450	760	980	405
275 mm	3160	2500	2675	1400	1965	735	2210	1745	1870	975	1375	515
360 mm	4160	3290	3470	1750	2625	950	2890	2285	2410	1215	1825	660

Light Characteristics

Cool White: 5300 – 7000K
Warm White: 2600 – 4300K
Green: 520 – 535 nm
Red: 620 – 630 nm
Yellow: 585 – 595 nm
Blue: 460 – 475 nm

Construction

PBT housing; acrylic window; nickel-plated brass connector or PVC-jacketed cable

Mounting

When mounting light to combustible or insulating surfaces, a minimum of 1 inch of clearance around all sides is required. Use supplied standoffs or alternative mounting method to achieve spacing. Accessory bracket available.

Environmental Rating

Rated IEC IP67 and IP69K, per DIN 40050

Connections

Integral 4-pin Euro style QD, or 2 m (6.5 ft) integral cable

Operating Temperature

-20° to +50° C (-4° to +122° F)

Storage Temperature

-40° to +70° C (-40° to +158° F)

Vibration and Mechanical Shock

All models meet Mil. Std. 202F requirements method 201A (vibration: 10 to 60 Hz max., double amplitude 0.06", maximum acceleration 10G). Also meets IEC 947-5-2; 30G 11 ms duration, half sine wave.

Certifications

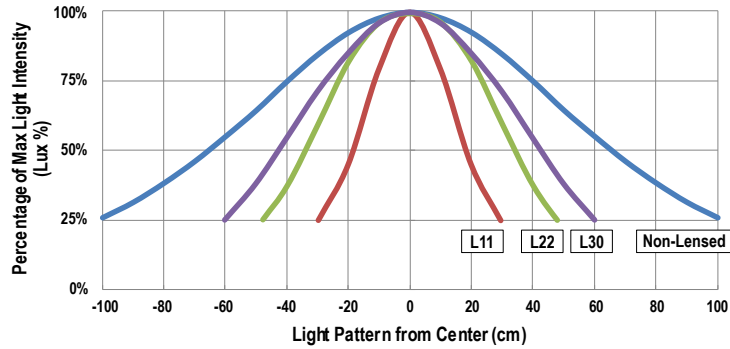


NOTE: Do not spray cable with high-pressure sprayer, or cable damage will result.

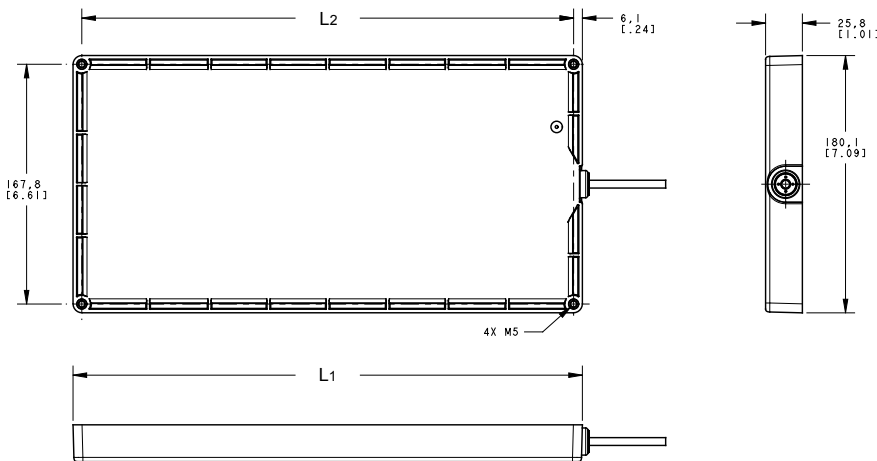
⁴ Lumen and lux values are typical when operating at 25 °C ambient. Values lowered by 35% on diffused windows models.

Beam Pattern

Percentage of Maximum Light Intensity for Lensed and Nonlensed Models at 1 Meter (Typical)

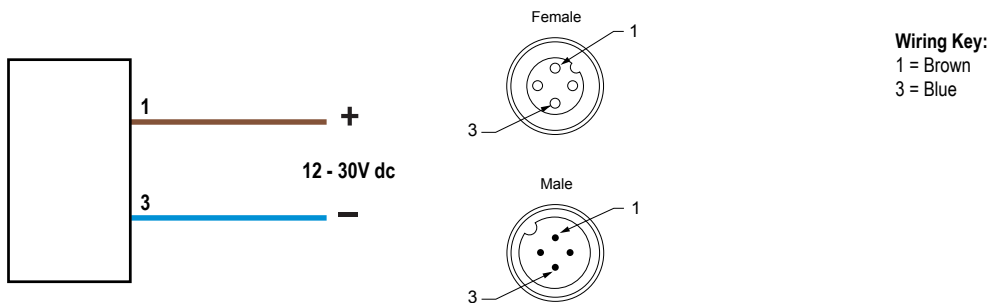


Dimensions

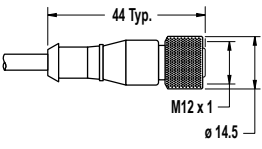
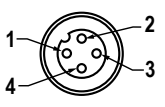
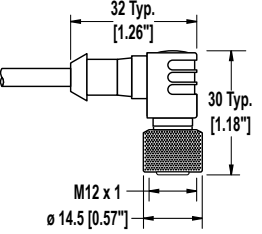


Model	L ₁	L ₂
WLAW105X..	105.1 mm (4.14 in)	92.8 mm (3.66 in)
WLAW190X..	180.1 mm (7.09 in)	167.8 mm (6.61 in)
WLAW275X..	272.7 mm (10.74 in)	260.3 mm (10.25 in)
WLAW360X..	356.6 mm (14.04 in)	344.3 mm (13.55 in)

Wiring



Cordsets

4-Pin Threaded M12/Euro-Style Cordsets				
Model	Length	Style	Dimensions	Pinout
MQDC-406	1.83 m (6 ft)	Straight		 1 = Brown 2 = White 3 = Blue 4 = Black
MQDC-415	4.57 m (15 ft)			
MQDC-430	9.14 m (30 ft)			
MQDC-450	15.2 m (50 ft)			
MQDC-406RA	1.83 m (6 ft)	Right-Angle		
MQDC-415RA	4.57 m (15 ft)			
MQDC-430RA	9.14 m (30 ft)			
MQDC-450RA	15.2 m (50 ft)			

Accessory Brackets

SMBBSSM

- 316 stainless steel bracket and hardware
- Includes 2 brackets; four M5 socket drive, button head screws to attach to light



SMBBSRA

- 316 stainless steel bracket and hardware
- Right-angle swivel bracket for versatile orientation



SMBWLAMAG

- Magnetic mounting bracket for easy attachment to steel surfaces
- SMBWLAMAGR protective cover also available to prevent scratches to painted surfaces



Banner Engineering Corp Limited Warranty

Banner Engineering Corp. warrants its products to be free from defects in material and workmanship for one year following the date of shipment. Banner Engineering Corp. will repair or replace, free of charge, any product of its manufacture which, at the time it is returned to the factory, is found to have been defective during the warranty period. This warranty does not cover damage or liability for misuse, abuse, or the improper application or installation of the Banner product.

THIS LIMITED WARRANTY IS EXCLUSIVE AND IN LIEU OF ALL OTHER WARRANTIES WHETHER EXPRESS OR IMPLIED (INCLUDING, WITHOUT LIMITATION, ANY WARRANTY OF MERCHANTABILITY OR FITNESS FOR A PARTICULAR PURPOSE), AND WHETHER ARISING UNDER COURSE OF PERFORMANCE, COURSE OF DEALING OR TRADE USAGE.

This Warranty is exclusive and limited to repair or, at the discretion of Banner Engineering Corp., replacement. **IN NO EVENT SHALL BANNER ENGINEERING CORP. BE LIABLE TO BUYER OR ANY OTHER PERSON OR ENTITY FOR ANY EXTRA COSTS, EXPENSES, LOSSES, LOSS OF PROFITS, OR ANY INCIDENTAL, CONSEQUENTIAL OR SPECIAL DAMAGES RESULTING FROM ANY PRODUCT DEFECT OR FROM THE USE OR INABILITY TO USE THE PRODUCT, WHETHER ARISING IN CONTRACT OR WARRANTY, STATUTE, TORT, STRICT LIABILITY, NEGLIGENCE, OR OTHERWISE.**

Banner Engineering Corp. reserves the right to change, modify or improve the design of the product without assuming any obligations or liabilities relating to any product previously manufactured by Banner Engineering Corp.

